



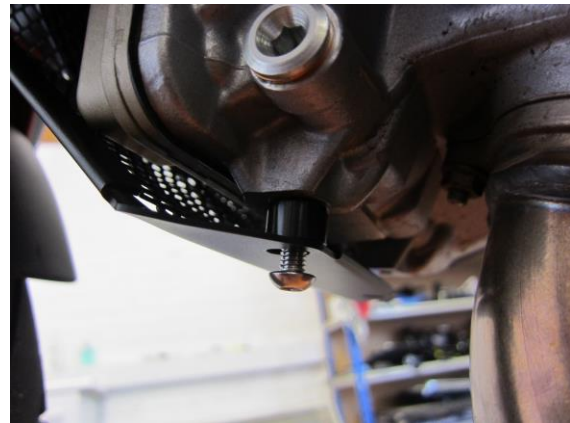
Fitting Instructions for CHG0002BK Cylinder Head Guard
DUCATI MULTISTRADA 1200 '10-'14



In This Kit There Should Be
1x Cylinder Head Guard (CHG0002BK)
2x Spacers (9mm long)
2x M6 x 20mm Long Button Head Bolts



Picture 1



Picture 2

TOOLS REQUIRED

- Socket set to include 4mm A/F socket & wrench.

R&G Racing
Unit 1, Shelley's Lane, East Worldham, Alton, Hampshire, GU34 3AQ
Tel: +44 (0)1420 89007 Fax: +44 (0)1420 87301 www.rg-racing.com Email: info@rg-racing.com



FITTING INSTRUCTIONS

- Take the R&G Cylinder Head Guard and offer it up to the bike, taking care to locate the mount on the top right of the guard over the lower mount of the radiator, as shown in picture 1. *The guards mount should sit between the flat plate of the bracket and the rubber mount.*
- Take the two M6 x 20mm long button head bolts and spacers supplied in the kit and locate through the two lower mounting holes, as shown in pictures 2, before tightening the bolts into the underside of the front cylinder head.
- Ensure the cylinder head guard is correctly fitted and all bolts are tightened evenly.

ISSUE 1 15/05/2014 (AR)

Digital copies of these instructions are available to download from www.rg-racing.com

CONSUMER NOTICE

The catalogue description and any exhibition of samples are only broad indications of the Products and R&G may make design changes which do not diminish their performance or visual appeal and supplying them in such state shall conform to the order. The Buyer acknowledges no representation or warranty (other than as to title) has been given or will apply to the Products other than those in R&G's order or confirmation and the Buyer confirms it has chosen the Products as being of merchantable quality and suitable for its particular purposes. Where R&G fits the Products or undertakes other services it shall exercise reasonable skill and care and rectify any fault free of charge unless the workmanship has been disturbed. The Buyer is responsible for ensuring that the warranty on the motorcycle is not affected by the fitting of the Products. On return of any defective Products R&G shall at its option either supply a replacement or refund the purchase money but shall not be liable if the Products have been modified or used or maintained otherwise than in accordance with R&G's or manufacturer's instructions and good engineering practice or if the defect arises from accident or neglect. Other than identified above and subject to R&G not limiting its liability for causing death and personal injury, it shall not be liable for indirect or consequential loss and otherwise its liability shall be limited to the amounts paid by the Buyer for the Products or the fitting or service concerned. These terms do not affect the Buyer's statutory rights.

R&G RACING RETURNS POLICY (NON-FAULTY GOODS)

Returns must be pre-authorized (if not pre-authorized the return will be rejected). Goods may only be returned direct to us if they were purchased direct from us (customer must prove if necessary). Otherwise to be returned to original vendor. Goods must be in re-sellable condition, in the opinion of R&G Racing. All returns are subject to a 25% restocking and handling fee (25% of the gross value exc. P&P – at the prevailing price at time of purchase). The customer must pay any and all carriage charges. No returns of discontinued products, unless within 14 days of purchase. This policy does not affect your statutory rights and does not refer to faulty goods.



INSTRUCTIONS DE MONTAGE CHG0002BK
DUCATI MULTISTRADA 1200 '10-'14



Le kit doit contenir :
1x Protection Tête de Cylindre (CHG0002BK)
2x Entretoises (9mm de long)
2x M6 x 20mm Boulons



PHOTO 1

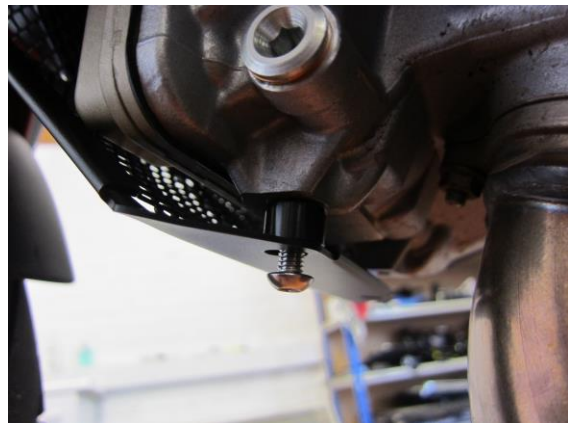


PHOTO 2



OUTILS REQUIS :

- Clé à douille 4mm.

INSTRUCTIONS DE MONTAGE :

- Prendre la protection tête de cylindre R&G et montez là sur la moto, en faisant attention à placer le support sur le coté droit supérieur de la protection sur le support inférieur du radiateur (photo 1).
Les supports protection doivent se placer entre la plaque du support et le support caoutchouc.
- Prendre les 2 boulons M6 x 20mm et les entretoises chapeau supérieures fournies dans le kit puis placez les à travers les 2 trous de fixation inférieurs (photo 2) avant de serrer les boulons dans le dessous de la tête de cylindre avant.
- Veiller à ce que la protection tête de cylindre soit correctement installée et que tous les boulons soient serrés correctement.

Ces instructions de montage sont disponibles sur www.rg-racing.com



Montageanleitung für CHG0002BK Zylinderkopfschutz
DUCATI MULTISTRADA 1200 '10-



Dieser Kit enthält:

- 1x Zylinderkopfschutz (CHG0002BK)
- 2x Abstandshalter (9mm Länge)
- 2x M6 x 20mm Inbusschrauben



Abbildung 1



Abbildung 2



SIE BENÖTIGEN FOLGENDES WERKZEUG

- Steckschlüsselsatz inkl. 4mm Steckschlüssel

MONTAGEANLEITUNG

- Den R&G Zylinderkopfschutz ans Motorrad ansetzen. Bitte darauf achten, dass die Halterung am Zylinderkopfschutz oben rechts über der unteren Halterung des Kühlers positioniert ist – siehe Abbildung 1. *Die Zylinderkopfschutzhalterung sollte zwischen der flachen Halterungsplatte des Halters und der Gummihalterung angebracht sein.*
- Nehmen Sie die zwei M6 x 20mm Inbusschrauben und die Abstandshalter vom Kit und führen Sie sie in die zwei unteren Montageöffnungen ein, wie in den Abbildungen 2 abgebildet, bevor Sie die Schrauben auf der Unterseite des vorderen Zylinderkopfes befestigen.
- Überprüfen Sie, dass der Zylinderkopfschutz ordnungsgemäß montiert ist und dass alle Schrauben gleichmäßig festgezogen sind.

Eine digitale Version dieser Montageanleitung kann auf folgender Seite heruntergeladen werden:

www.rg-racing.com